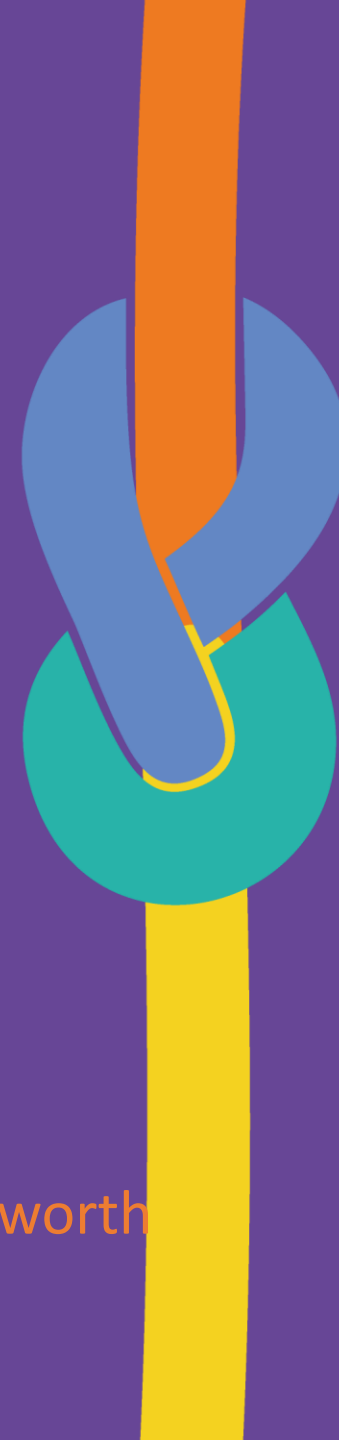


COVID-19 vaccination: your questions answered

Page 27

Fiona White - Quality Assurance Manager and Nurse Consultant
NHS Merton, South West London Clinical Commissioning Group

Kalu Obuka - Head of Engagement and Equalities, Merton & Wandsworth
South West London Clinical Commissioning Group



Aim of the session: To support our community around understanding COVID-19 and the vaccination programme

- The COVID -19 vaccination

Number of Merton COVID-19 cases

15,977 (published Tuesday 23 March 2021)

Merton Vaccination Uptake

Based on the weekly published NHS data set, which is available [here](#).

Page 29 Merton figures (as of the last publication on the 18th March).

	Number of people vaccinated with at least 1 dose						
	Under 55	55-59	60-64	65-69	70-74	75-79	80+
Merton	25,348	8,004	8,217	7,062	6,417	4,368	6,794
% achieved*	33.8%	55.8%	70.6%	79.3%	83.6%	83.9%	83.6%

Average vaccination uptake achieved for Wimbledon Park Ward – 68.0%

*Percentages as of 16th March. Data is draft and subject to change due to multiple local and national sources.

Why use a vaccine?

- Vaccines are crucial and part of our defence against infectious diseases.
 - When enough people get vaccinated, it's harder for a disease to spread to those who can't have vaccines.
- Getting vaccinated protects not only you but also your family, friends and community.
- Vaccines are made to prevent people from getting serious infectious diseases. It's much safer for your immune system to learn to fight illness through vaccination than by catching and treating them.
 - At present we don't know whether it stops you spreading the virus to other people, so you still need to wear a mask, wash your hands and social distance after you have been vaccinated.

[Find out more about vaccines and why they are safe and important](#)



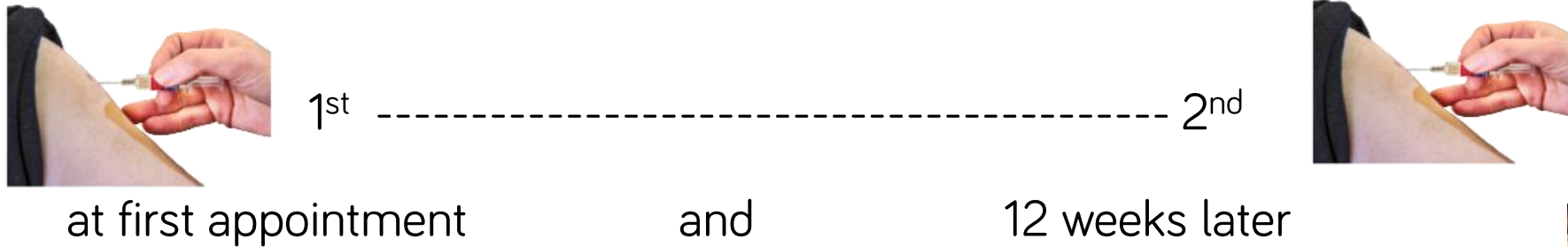
What vaccines are currently available?

- Pfizer/BioNTech
- Oxford/AstraZeneca COVID-19 vaccines are now available
- Vaccines have to pass their rigorous tests on safety and efficacy, so people should be assured that whatever vaccine they get will be safe and effective.

Page 31

You may have heard about new coronavirus vaccines in the media, including those from Moderna and Novavax. We don't have full information about the new vaccines yet, but can assure that any vaccines that the NHS will provide will have been approved by the MHRA. Vaccines have to pass their rigorous tests on safety and efficacy, so people should be assured that whatever vaccine they get will be safe and effective.

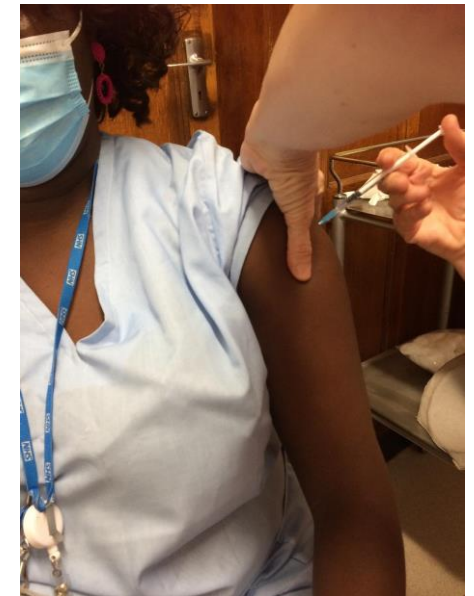
You will have two injections in your arm



Page 32

Your practice will let you know when you need to come back.

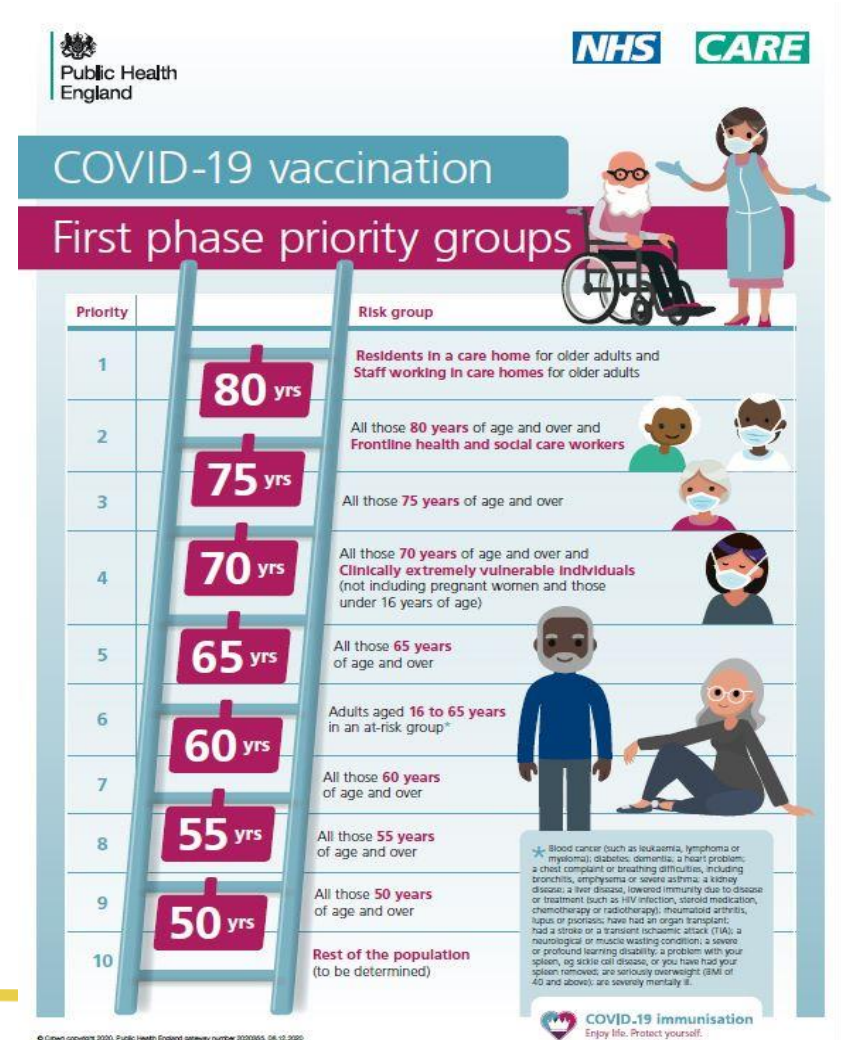
After three weeks you will be safer from the virus



Who will get the COVID-19 vaccine and when?

- The JCVI priority list is as follows:
 1. residents in a care home for older adults and their carers
 2. all those 80 years of age and over and frontline health and social care workers
 3. all those 75 years of age and over
 4. all those 70 years of age and over and clinically extremely vulnerable individuals
 5. all those 65 years of age and over
 6. all individuals aged 16 years* / 18 years to 64 years with underlying health conditions which put them at higher risk of serious disease and mortality
 7. all those 60 years of age and over
 8. all those 55 years of age and over
 9. all those 50 years of age and over

Page 339



Where will the COVID-19 vaccine be administered?

- Since 8 December over 500 local vaccination services and nearly 80 hospital hubs have launched what is the largest vaccination programme in the history of the NHS - at the same time as the whole of the health service has been dealing with the intensifying Covid pressures.
- Current hubs in Merton: Wilson Hospital and West Wimbledon Clinic (The Nelson).
- We are continuing to build capacity across the system to offer more vaccinations with additional local vaccination services, hospital and vaccination centres coming on-line.
- Community COVID-19 vaccination pop-up clinic

Thank you for all of your questions today. We hope you have found the session useful.

Please email mertonccg.getinvolved@swlondon.nhs.uk if you have any feedback or suggestions for future sessions.

This page is intentionally left blank